



# Why FARM?

For the mindful consumer, the process of how food reaches their table can be as important as the nutrition or satisfaction it provides. The National Dairy Farmers Assuring Responsible Management (FARM)<sup>™</sup> Program delivers assurance that the process starts with the highest quality animal care, sustainability and workplace management.

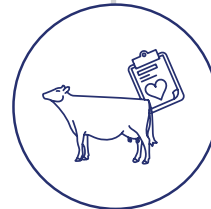
The FARM Program partners with farmers, subject matter experts, dairy cooperatives and processors to establish the highest, science-based standards and best practices for the dairy industry in Animal Care, Antibiotic Stewardship, Biosecurity, Environmental Stewardship and Workforce Development. Through work with like-minded industry stakeholders, FARM continues to build trust in U.S. dairy.

## About FARM

FARM was created by the National Milk Producers Federation (NMPF) with support from Dairy Management Inc.<sup>™</sup> (DMI) in 2009. Program participation is open to all U.S. dairy farmers, cooperatives and processors. Participants follow rigorous guidelines to ensure the utmost social responsibility on our nation's dairy farms, while committing to continuous improvement. Strong farm management practices are ethical obligations of any dairy business and are vital to ensure long-term success of the dairy industry. **Find out more:** [nationaldairyfarm.com](http://nationaldairyfarm.com)



**ANTIBIOTIC  
STEWARDSHIP**  
EST. 1990



**ANIMAL CARE**  
EST. 2009



**ENVIRONMENTAL  
STEWARDSHIP**  
EST. 2017



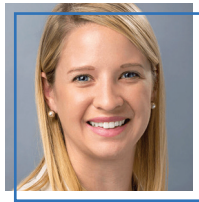
**WORKFORCE  
DEVELOPMENT**  
EST. 2018



**BIOSECURITY**  
EST. 2021



# Contact Us



**EMILY YEISER STEPP**

*Vice President*  
National Dairy  
FARM Program  
eyeiserstepp@nmpf.org



**JAMIE JONKER**

*Chief Science Officer  
and Vice President*  
Sustainability &  
Scientific Affairs  
jjonker@nmpf.org



**NICOLE AYACHE**

*Vice President*  
Environmental  
Stewardship  
and Sustainability  
nayache@nmpf.org



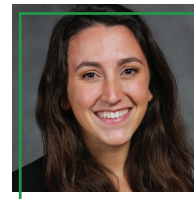
**BEVERLY  
HAMPTON PHIFER**

*Director*  
Animal Care  
bhamptonphifer@nmpf.org



**MIQUELA HANSELMAN**

*Manager*  
Regulatory Affairs  
mhanselman@nmpf.org



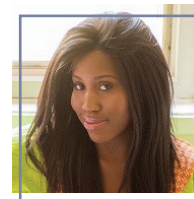
**SAGE SAFFRAN**

*Coordinator*  
Sustainability Initiatives  
ssaffran@nmpf.org



**RACHEL RAVENCRAFT**

*Manager*  
Communications  
rravencraft@nmpf.org



**NENE BUNDU**

*Program Coordinator*  
nbundu@nmpf.org



**ABDULLAH IBRAHIMZADA**

*Analyst*  
Information Systems  
aibrahimzada@nmpf.org



**Meet the  
Team!**



2107 Wilson Blvd., Suite 600  
Arlington, VA 22201

[nationaldairyfarm.com](http://nationaldairyfarm.com)

(703) 243-6111 | [dairyfarm@nmpf.org](mailto:dairyfarm@nmpf.org)

**#FARMproud**

