



NATIONAL DAIRY FARM PROGRAM



2023

YEAR IN REVIEW





The National Dairy Farmers Assuring Responsible Management (FARM)[™] Program was created by the National Milk Producers Federation (NMPF) with support from Dairy Management Inc.[™] (DMI) in 2009. Program participation is open to all U.S. dairy farmers, cooperatives, and processors. Participants follow rigorous guidelines to ensure the utmost social responsibility on our nation's dairy farms, while committing to continuous improvement. Strong farm management practices are ethical obligations of any dairy business and are vital to ensure long-term success of the dairy industry. Find out more:

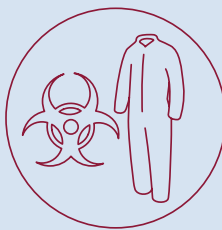
nationaldairyfarm.com



NMPF is the voice of dairy cooperatives at our nation's capital. Its mission is to foster an economic and political climate in which dairy farmers, and the cooperatives they own, can thrive, and prosper. Success in doing so assures consumers of wholesome and nutritious dairy products at affordable prices. The FARM Program allows NMPF to show policymakers how the dairy industry employs a robust, standards-based approach to ensure excellence and continued improvement. Find out more: nmpf.org



Dairy Management Inc.[™] (DMI) is funded by America's 26,000 dairy farmers, as well as dairy importers. Created to help increase sales and demand for dairy products, DMI and its related organizations work to increase demand for dairy through research, education and innovation, and to maintain confidence in dairy foods, farms and businesses. DMI manages National Dairy Council and the American Dairy Association, and founded the U.S. Dairy Export Council, and the Innovation Center for U.S. Dairy. Find out more: dairy.org



A MESSAGE FROM THE EXECUTIVE DIRECTOR



The only constant is change and 2023 certainly was a year of preparing for change within the National Dairy Farmers Assuring Responsible Management (FARM) Program. As we approach 15 years of the program's existence, it was only fitting that the past year culminated in finalizing the next iteration of U.S. dairy's on-farm social responsibility efforts.

Refinement efforts in Animal Care were finalized with board approval of the fifth iteration of our world-class program, all while the excitement continues to grow around the potential for the third iteration of Environmental Stewardship and the integration of the RuFaS model. Interest in our newest program area of Biosecurity grew, further assuring safeguard from threats, while we also saw greater engagement in Workforce Development, having farms and participants use the program's resources to further enhance on-farm safety and people management.

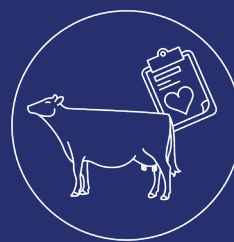
While a significant amount of time was taken to get these programs ready for 2024, it also allowed our staff to engage with more industry leaders. This engagement reaffirmed partnerships, most importantly, our partnership with DMI, that ensures ultimate value generation for each facet of the dairy supply chain, from farmer to consumer.

As we look to the future of the program, change is certain and exciting. But before we embrace this change, please enjoy the reflection upon the progress made on the industry's behalf last year.

A handwritten signature in black ink that reads "Emily Yeiser Stepp".

Emily Yeiser Stepp
Executive Director, The National Dairy FARM Program

ANIMAL CARE



The FARM Animal Care Program demonstrates dairy farmers' commitment to providing excellent care of their dairy cattle and producing safe, wholesome milk. Animal Care is the foundational pillar of the FARM Program, establishing and maintaining the highest level of science-based animal welfare standards for the U.S. dairy industry. More than 99 percent of the U.S. milk supply is evaluated for and covered by FARM Animal Care.

In 2023, FARM Animal Care trained 444 new and experienced Animal Care Evaluators. FARM Animal Care continues to be recognized as a premier program and received Professional Animal Auditor Certification Organization (PAACO) recertification for the third year in a row. FARM also released new and updated resources throughout the year, including posters and fillable farmer resources available in English and Spanish. FARM continued to make progress in 2023 toward updating its Animal Care standards for Version 5 and began development on Animal Care Version 5 resources to be released throughout 2024.

BY THE NUMBERS

11,544

**Animal Care V4
Evaluations in 2023**

399 Evaluators completed and
passed certification course

45 new Evaluators certified

1

median number of
Continuous Improvement
Plans (CIPs) per facility

70.57%

of facilities had a valid, signed
Veterinarian-Client-Patient
Relationship (VCPR) form

2

median number of
Mandatory Corrective Action
Plans (MCAPs) per facility

82.61%

of facilities met the stockmanship
training requirement for family
and non-family employees

Animal Care Version 5

Program standards are reviewed every three years and revisions are proposed to align with the latest research and best management practices. The current Version 4 Animal Care standards are operating on an extended window due to COVID-19. These standards went into effect Jan. 1, 2020 and will remain in effect until July 1, 2024.

In 2023, the FARM Animal Care Task Force and NMPF Animal Health and Well-Being Committee continued work toward Version 5 standards updates. The Open Comment Period for public feedback on proposed standards was open in the fall of 2023, providing feedback from 300 individuals, co-ops and processors, and allied industry that was reviewed by task force and committee members to inform final recommendations to be put forward to the NMPF Board of Directors in March 2023. The NMPF Board of Directors approved the Version 5 standards at the March NMPF board meeting. After final standards approval, the FARM Program began development on training materials and farmer resources to be released in 2024. Details about the changes made can be found on the **FARM website**.

CCQA Progress

The Calf Care & Quality Assurance (CCQA) program was developed in 2020 in partnership with the FARM Program, the National Cattlemen's Beef Association's (NCBA) Beef Quality Assurance (BQA) program, the Veal Quality Assurance (VQA) program, and the Dairy Calf and Heifer Association (DCHA) to elevate U.S. calf raiser standards by uniting around key management practices. CCQA maintains a dairy-influenced, calf-specific reference manual, self assessment, and both online and in-person calf caretaker certification training modules available in Spanish and English. This training course also meets the calf care continuing education requirement for the FARM Animal Care Program. CCQA is working to create an on-farm audit for calf raising facilities in the future. For more information visit calfcareqa.org.



Willful Mistreatment and Neglect Protocol

In a situation where credible evidence or allegations of willful mistreatment or neglect of animals is reported to the FARM Program, a thorough review of the allegation is completed by an ad hoc FARM committee. In situations where evidence is deemed credible, a third-party audit of the alleged animal care issues at the farm is conducted to determine the validity of the evidence or allegations. In any willful mistreatment investigation, the hope is that the allegations or evidence are proven to be untrue. If evidence or allegations are verified through the audit, the protocol requires the farm to take mandatory corrective action steps before FARM will return the farm to good standing and full certification in the program. Corrective action resolutions are verified through a follow-up audit. Only after successful completion and verification that the corrective action steps have been implemented is the farm reinstated to good standing with the FARM Program.

FARM IN ACTION

2023 FARM Excellence Award Winner

Animal Care & Antibiotic Stewardship



INGLESIDE DAIRY FARM, INC.

Lexington, VA

Dairy Farmers of America

Ingleside Dairy Farm, Inc. is a family dairy located in Lexington, Virginia and is a Dairy Farmers of America member farm. Ingleside Dairy was started in 1967 with 12 cows and has grown to include 320 Holsteins and 2,000 acres of rented and owned land. Ingleside Dairy Farm was the first Virginia farm to install robotic milking machines. Their forward-thinking mindset has demonstrated to farmers across the Southeast that technology can play a significant role in herd health, reproduction practices, and best management practices. Each cow is carefully managed and receives specialized care each day, based on their needs once leaving the robot.

At Ingleside Dairy, the owners use the FARM Program resources—including videos, posters, and protocol templates—to support their animal care and training programs. For example, the farm has adapted the sample herd health plan and treatment record examples from the FARM Program as an outline for their plans. Additionally, having worked with their veterinarian and the Virginia Tech vet school, the farm has developed vaccination programs, developed mastitis protocols to improve somatic cell count and changed bedding practices to improve hock scores.

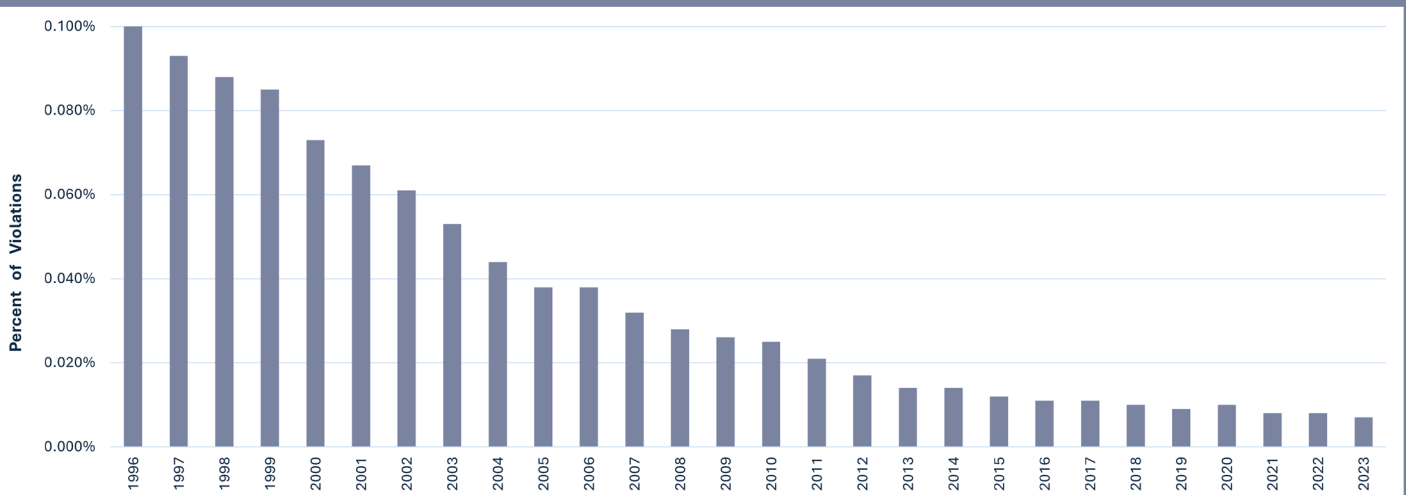
Ingleside Dairy Farm has been lauded as an excellent member of their own community and the dairy community at large. The Leech family's dedication to their animals and the environment encourages others to work toward the same goals. Jennifer Leech, the herds person at Ingleside Dairy Farm Inc., is responsible for caring for cows on the dairy, establishing and maintaining the herd health plans and treatment records along with her veterinarian, and maintaining all of the dairy's financials. Jennifer serves in a number of leadership roles for her co-op, her regional checkoff organization, and she sits on the FARM Program's Farmer Advisory Council to share her experience implementing the FARM Program and help shape the program's future.

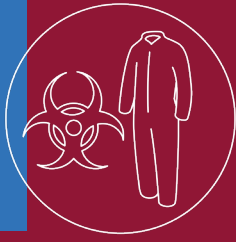


ANTIBIOTIC STEWARDSHIP

FARM Antibiotic Stewardship and the FARM Animal Care Veterinary-Client-Patient-Relationship requirement have continued to support the dairy industry in its dedication to the judicious use of antibiotics. Less than seven-thousandths of one percent – only 1 out of every 14,100 milk tankers – tested positive for antibiotic residues last year, according to the 2023 National Milk Drug Residue Database annual report released on Dec. 15 by the U.S. Food and Drug Administration. The data illustrates the continued long-term national pattern of improvements in milk quality practices by the industry. The number of samples tested (tankers, packaged products, producer samples) and reported positive decreased from 424 in 2022 to 345 in 2023; no pasteurized packaged dairy products out of 28,842 tested were found to have an antibiotic residue.

2023 Milk Tanker Truck Residue Violations





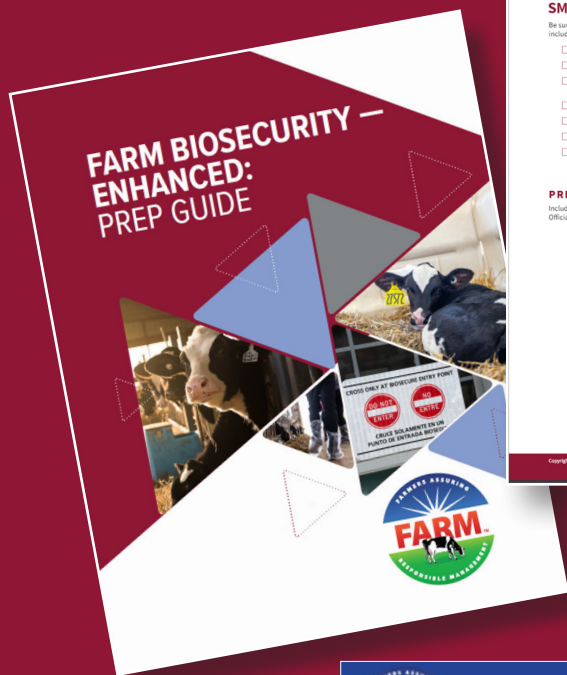
BIOSECURITY

FARM Biosecurity launched Biosecurity – Enhanced in 2023 using resources developed through the Secure Milk Supply to help prepare the dairy industry for a foot-and-mouth disease (FMD) outbreak. FARM Biosecurity – Enhanced, includes an online database to develop and securely store dairy producers' enhanced biosecurity plans (EBP) and an online training that helps users write those plans. FARM also developed a FARM Biosecurity – Enhanced Biosecurity Prep Guide and Database User Guide to complement these tools.

Stronger, or enhanced, levels of biosecurity will be needed to protect cattle against the highly contagious FMD found in two-thirds of the world. One FMD case in the United States could shut down movement across the nation of livestock and their products for at least 72 hours.

The Secure Milk Supply (SMS) Plan for Continuity of Business was designed to help the dairy industry prepare for an FMD outbreak by providing producers with the tools to develop an enhanced biosecurity plan. The FARM Biosecurity – Enhanced database not only securely stores the EBP plans, but with producer permission can share the plans with state animal health officials for pre-outbreak approval to speed up issuing a movement permit in the event of an FMD outbreak.

Everyday Biosecurity was launched in 2021, focused on providing dairy farmers with the tools needed to protect the health of their herd and employees. All FARM Biosecurity resources aim to protect dairy cattle and business continuity opportunities, and to build resiliency for the dairy industry. NMPF and the National Dairy FARM Program would like to thank the United States Department of Agriculture National Animal Disease Preparedness and Response Program (USDA NADPRP) for funding the FARM Biosecurity initiative through a cooperative agreement and Dr. Danelle Bickett-Weddle with Preventalytics who was instrumental in the development of the FARM Biosecurity resources.



SMS ENHANCED BIOSECURITY PREMISES MAP CHECKLIST

Be sure the premises map is labeled (either by hand or electronically) with the following & check that each has been included:

<input type="checkbox"/> Premises Name	<input type="checkbox"/> Designated parking area	<input type="checkbox"/> Animal Loading/Unloading Area(s)
<input type="checkbox"/> Premises Address	<input type="checkbox"/> Milk truck route to milk house	<input type="checkbox"/> Label animal housing areas, feed areas, manure storage
<input type="checkbox"/> Premises Identification Number (PIN)	<input type="checkbox"/> Milk house	<input type="checkbox"/> Legend
<input type="checkbox"/> Public road	<input type="checkbox"/> Carcass disposal (pickup location)	
<input type="checkbox"/> Line of Separation (LOS)	<input type="checkbox"/> Carcass removal pathways	
<input type="checkbox"/> LOS Access Point(s)	<input type="checkbox"/> Deliveries (non-essential to the dairy)	
<input type="checkbox"/> Vehicle cleaning and disinfection (CDD) station(s)	<input type="checkbox"/> Compass indicating North	

PREMISES MAP LEGEND

Include a legend with your map. Using the suggested icons, colors, and labels below adds to consistency when State Officials review your plan.

	Public Road (blue)
	LOS (red)
	LOS Access Point(s) (orange)
	Vehicle CDD Station(s) (green diamond, not outline)
	Designated Parking Area (yellow box)
	Milk Truck Route to Milk House (green arrow)
	Milk House (milk bottle logo)
	Carcass Disposal/Pickup (black box white fill)
	Carcass Removal Pathway(s) (black arrow)
	Deliveries (Non-essential) (purple star)
	Compass Indicating North (contrasting color, yellow example)
	Animal Loading/Unloading (pink star)

Copyright 2022 National Milk Producers Federation. All rights reserved.



How to use the FARM Database for Enhanced Biosecurity Plans

Using the FARM Database – Enhanced Biosecurity

Using the FARM DATABASE
Creating Enhanced Biosecurity Plans

State Officials: Reviewing Enhanced Biosecurity Plans in the FARM Database

Using the FARM Database – Enhanced Biosecurity

This 14-minute video tutorial highlights key features of the FARM Biosecurity database to create Secure Milk Supply Enhanced Biosecurity Plans. Combined with the FARM Biosecurity Database User Guide, viewers will learn how to efficiently enter information into the online tool and voluntarily share with State Officials for review. The FARM Biosecurity – Enhanced: Prep Guide has details to help prepare for farm visits and biosecurity plan writing.

State Officials: Reviewing Enhanced Biosecurity Plans in the FARM Database

This 9-minute video tutorial guides State Officials through the process of reviewing Secure Milk Supply Enhanced Biosecurity Plans in the FARM Database from notification via email through acceptance. Only Plans that are voluntarily shared by producers will be available for review.

**FARM Biosecurity – Enhanced
launched in 2023 with many
new resources**

FARM IN ACTION

2023 FARM Excellence Award Winner

Workforce Development



NEWMONT FARM LLC

*Fairlee, VT
Agri-Mark, Inc.*



Newmont Farm LLC is located in Orange County, Vermont and is an Agri-Mark member farm. Newmont Farm was started by Walt and Margaret Gladstone in 1987 with 120 cows. Today, Walt and Margaret Gladstone share ownership with their two sons, Will and Matt. At their Fairlee, Vermont farm, the Gladstones care for 1,800 Holstein cows and 1,600 heifers. They grow about 1,200 acres of corn and 900 acres of grass to feed their animals.

Newmont Farm has been a champion for the FARM Workforce Development Program, and was one of the first Agri-Mark farms to volunteer to participate in a Workforce Development Evaluation. Newmont Farm has also worked with their co-op to provide a farm tour for employees of a customer with an interest in the Workforce Development Program, showing them the value and benefits of the program.

Newmont Farm had already implemented many safety and workforce best practices before joining the FARM Workforce Development Program, including requiring New York Center for Agricultural Medicine and Health (NYCAMH) safety training on a wide variety of topics, participating in NYCAMH inspections, having yearly insurance audits, and keeping employee training logs with signatures. Additionally, each housing unit on Newmont Farm has its own 911 number and address so that employees can be clear and direct with 911 operators in an emergency.

After completing the FARM Workforce Development Evaluation, the Gladstones took the opportunity to review their written policies and update their Employee Handbook. The farm consistently reviews their HR and safety practices for opportunities for enhancement over time.



WORKFORCE DEVELOPMENT

The FARM Workforce Development Program equips dairy owners and managers with tools to enhance their safe and thriving work environments. Since launching the FARM Workforce Development Evaluation in 2020, more than 500 Evaluations covering HR and safety topics have been conducted on farms that together employ more than 9,700 people.

The Evaluations completed to-date offer a window into HR and safety practices of participating farms. Participating farms demonstrate investing in their employees; 100% of responding farms provide employee training. Highlighting a commitment to safety, 86% of responding farms have an established process for employees to report safety concerns and 98% of participating farms report addressing safety hazards or risk when they have been identified. Written policies and documentation of practices are areas of opportunity – for example, 42% of farms report documenting employee orientation.*

The Workforce Development Program held four successful virtual Evaluator training sessions in 2023, with a new format that incorporated subject matter experts to take a deeper dive into the Evaluation. The training featured representatives from Cornell Agricultural Workforce Development to cover human resource topics and from the New York Center for Agricultural Medicine and Health (NYCAMH) to review on-farm safety with the group. In 2023, there were 69 Workforce Development Evaluators certified across 20 organizations.

FARM launched Impact Stories in 2023 to communicate the great work being done on dairy farms across the country and capture the value of the Workforce Development program area. Agri-Mark's Newmont Farms and Maryland & Virginia Milk Producers Cooperative Association's Misty Mountain Dairy were both highlighted. Among other valuable management practices, their Impact Stories demonstrate their commitment to employee safety and effective workplace communication.

The FARM Workforce Development Task Force finalized their proposed minor changes for the Version 2.0 Evaluation throughout 2023. FARM Workforce Development will launch the updated Evaluation in July 2024.

**Data only reflects the Evaluations completed as of December 2023 and is not nationally representative. Farms with only family employees (0 non-family employees) may not respond to every question.*

ENVIRONMENTAL STEWARDSHIP



Since the inception of FARM Environmental Stewardship, more than 4,000 on-farm assessments have been completed on dairies in 42 states ranging in size from 10 to over 35,000 lactating cows. In 2023, Environmental Stewardship continued its wide-spread implementation with Evaluators conducting more than 1,000 Evaluations. Evaluators provided insights about each farm's greenhouse gas (GHG) and energy footprints, identified potential areas for operational improvement, and enabled progress reporting to supply chain customers.

FARM Environmental Stewardship released an updated Frequently Asked Questions webpage to address data input and model function questions. The page is searchable and filterable to allow the Evaluator network to easily find answers to common questions.





BY THE NUMBERS

1,000+

**Environmental
Stewardship
assessments completed
in 2023**

53

**participating organizations,
making up 80% of the
U.S. milk supply**

Version 3 Progress

The FARM Program, Dairy Management Inc. (DMI), and the Ruminant Farm Systems (RuFaS) model leads are collaborating to incorporate the RuFaS model into Version 3 of FARM Environmental Stewardship. Transitioning FARM Environmental Stewardship to a process-based model for GHG footprinting will provide sophisticated farm-level environmental insights to producers. FARM Environmental Stewardship Version 3 results will support informed decision-making about the adoption of climate-friendly practices and technology.

In 2023, the FARM Environmental Stewardship Version 3 Working Group made up of farmers, co-op staff, and processor staff convened as key stakeholders to inform the evolution of FARM Environmental Stewardship. The Working Group met four times in 2023 to discuss pre-set scenarios and data inputs for the next version. Also in 2023, FARM Environmental Stewardship facilitated additional on-farm field testing of the scientific model, hosting training sessions to equip Evaluators for on-farm data collection. Data collection was completed on over 25 volunteer farms in 2023 to evaluate the model's performance on farms of varying geography, management style and size. The data collection also yielded valuable farmer and Evaluator feedback.

FARM IN ACTION

2023 FARM Excellence Award Winner

Evaluator of the Year



JIM KAUFFMAN

Associated Milk Producers Inc.

Jim Kauffman has been a FARM Animal Care Evaluator since 2014. During this time, Jim has completed more than 250 FARM Animal Care Evaluations and has collaborated diligently with members to resolve nearly 200 different corrective action plans. Since starting with AMPI in 2011, Jim has made more than 1,300 FARM Program-related member visits.

With more than 30 years of experience, Jim brings a wealth of industry knowledge. He is a lifelong learner, always curious to ask questions and to keep up with the latest information. You will always find Jim with a smile and looking for the positive in

each situation. He takes his role as a FARM Evaluator seriously from respecting farm biosecurity to making sure to maintain the confidentiality of the farmer's information. His empathy and keen listening skills are what producers appreciate in helping them feel heard.



CONTACT US

nationaldairyfarm.com | (703) 243-6111 | dairyfarm@nmpf.org



Meet the Team!

Scan the QR code or visit the the FARM Program website to learn more about our staff.

2023 PARTICIPATING ORGANIZATIONS

Thank you to the many cooperatives and processors that participated in the FARM Animal Care, Environmental Stewardship, and Workforce Development Programs in 2023.

Agri-Mark ●●●●●
Agropur, Inc. USA ●●●
Albertson's ●
Appalachian Dairy Farmers Cooperative ●
Arla Foods ●●●
Arps Dairy, Inc. ●
Associated Milk Producers, Inc. ●●●●
Aurora Organic Dairy ●
Beecher's Handmade Cheese, LLC ●
BelGioioso Cheese, Inc. ●
Bongards Creameries ●●●●
Boonville Farms Co-op ●
Borden Dairy Company ●
Brewster Cheese ●
Burnett Dairy Cooperative ●
Byrne Dairy, Inc. ●
California Dairies, Inc. ●●●●
Cascade Cheese ●
Cayuga Marketing ●●●●●
Cedar Valley Cheese ●
Central Equity Milk Co-op ●
Chalet Cheese Cooperative ●
Chula Vista Cheese Co. ●
ClarCo Farmers Co-op ●
Clark Amish Community Cooperative ●
Clover Farms Dairy Company ●
Cloverland Farms Dairy ●●●
Cobblestone Milk Cooperative ●
Conagra Brands ●●●
Cooperativa De Productores De Leche De Puerto Rico ●
Cooperative Milk Producers Association ●●●
CROPP Cooperative/Organic Valley ●
Dairy Farmers of America ●●●●●
Danone North America ●
Decatur Swiss Cheese Cooperative ●
Eau Galle Cheese Factory, LLC ●●●
Elba Co-op Creamery ●
Ellsworth Cooperative Creamery ●●●●
Erie Cooperative Association ●
Farmers Cheese Cooperative Association ●
FarmFirst Dairy Cooperative ●●●●
Finger Lakes Milk Co-op ●
First District Association ●●●●●
Foremost Farms USA ●●●●
Foster Farms (Crystal Creamery & Humboldt Creamery) ●
Galliker Dairy Company ●
GH Dairy ●
Glanbia Foods, Inc. ●●●●●
Gossner Foods, Inc. ●

Grande Cheese ●●●
Grant Farmers' Cooperative ●
Grassland Dairy Products, Inc. ●●●
Great Lakes Milk Producers ●●●
Great Plains Dairy Association ●
Green Acres Dairy Cooperative ●
Guggisberg Cheese, Inc. ●
Harmony Milk Producers Cooperative ●
Harrisburg Dairies, Inc. ●
Hastings Creamery ●
High Desert Milk ●●●
Hilmar Cheese Company ●●●
Holland Patent Farmers Co-op ●
Homestead Creamery, Inc. ●
Horizon Organic Dairy LLC ●
Idaho Milk Products ●●●
Innovative Food Solutions (Gibby Group) ●
Jefferson Bulk Milk Co-op, Inc. ●
Joseph Gallo Farms ●●●
Kalona Farms ●
Klondike Cheese Co. ●
KYTN Cooperative Association LLC ●
Lactalis American Group ●●●
Lactalis US Yogurt, Inc. ●
Lafayette Dairies ●
LaGrander's Hillside Dairy ●
Lake Country Dairy ●
Lanco Pennland ●
Land O'Lakes, Inc. ●●●●●
Leprino Foods ●●●
Liberty Milk Producers, Inc. ●
Lone Star Milk Producers ●●●●
Lowville Producers Dairy Cooperative ●●●
Magic Valley Quality Milk Producers ●●●
Maryland & Virginia Milk Producers Cooperative Association ●●●●●
Michigan Milk Producers Association ●●●●
Middlebury Co-op ●
Minerva Dairy, Inc. ●
Mohawk Valley Cooperative, Inc. ●
Mullins Cheese, Inc. ●●●
Nasonville Dairy ●
National Farmers Organization (NFO) ●●●●
Natural Dairy Products ●
Nebraska Milk Producers Non-Stock Cooperative ●
Nestle USA ●●●
North Mountain Farms LLC ●
Northwest Dairy Association ●●●●●
Oak Grove Dairy, Inc. ●
Oberweis Dairy ●

Old Country Farms Co-op ●
Oneida-Madison Milk Producers Co-op ●●●
Organic Family Farms Marketing LLC ●
Organic West Milk, Inc. ●
Pacific Gold Milk Producers ●
Pearl Valley Cheese ●
Pioneer Milk Producers Cooperative ●
Plainview Milk Products Cooperative ●●●
Pocono Mountain Dairies ●
Prairie Farms Dairy, Inc. ●●●●
Preble Milk Co-op Association, Inc. ●
Producer's Cooperative, Inc. ●
Riverview LLP ●●●
Rizo Lopez Foods, Inc. ●
Rolling Hills Dairy Producer Cooperative ●●●
Rutter's Dairy, Inc. ●
Saputo USA ●●●
Sargento Foods, Inc. ●●●
Sartori Company ●●●
Scenic Central Milk Producers Cooperative ●
Schneider's Dairy, Inc. ●
Select Milk Producers, Inc. ●●●●
SmithFoods, Inc. ●
Snake River Dairyman's Association ●●●●
Southeast Milk, Inc. ●●●●
Steamburg Milk Producers Cooperative ●
Stewart's Processing Corporation ●
Stonyfield Farm, Inc. ●
Superior Dairy ●
Tillamook County Creamery Association ●●●●
Toft Dairy ●
Turner Dairy Farms, Inc. ●
United Ag Services ●
United Dairy, Inc. ●
United Dairywomen of Arizona ●●●●
University of Wisconsin ●
Upstate Niagara Cooperative, Inc. ●●●●
US Milk LLC ●
Utah Dairy Farms Cooperative ●
Valley Milk ●●●
Valley Queen Cheese Factory, Inc. ●●●
Walmart ●●●
Wapsie Valley Creamery, Inc. ●●●
Wells Enterprises, Inc. (Blue Bunny) ●
Westby Cooperative Creamery ●
Western Organic Family Farms Cooperative ●
Weyauwega Star Dairy, Inc. ●
White Eagle Cooperative ●●●
Widmer's Cheese Cellars, Inc. ●
Wisconsin Dairy State Cheese Company ●
Zimmerman Cheese, Inc. ●

● ANIMAL CARE PARTICIPANTS
● ENVIRONMENTAL STEWARDSHIP PARTICIPANTS
● WORKFORCE DEVELOPMENT PARTICIPANTS
● NATIONAL MILK PRODUCERS FEDERATION MEMBER

